

Process development facilities

Serichim operates the entire set of equipment for process development study and evaluation, including batch and continuous reactors, crystallization and filtering apparatuses, batch and continuous distillation columns and liquid-liquid extraction columns. Practically all common continuous operations can be operated at lab, bench and pilot scales.

The reactor families.

Batch reactors

	1	2	3	4	5	6	7	8	9	10	11
Material	AISI 316L	Glass lined	Glass	AISI 316L	AISI 316L	Glass lined	AISI 316L	AISI 316L	AISI 316L	AISI 316L	AISI 316L
Volume, l	500	500	200	100	100	100	100	30	30	20	10
Pressure, barg	-1 / 5	-1 / 5	-1 / 5	-1 / 5	-1 / 5	-1 / 7	-1 / 0	-1 / 0	-1 / 0	-1 / 22	-1 / 0
Temperature, °C	0 / 180	0 / 180	0 / 180	0 / 300	0 / 180	0 / 180	0 / 180	0 / 180	-20 / 180	0 / 180	0 / 180

Continuous reactors



CompactChem 10 l
P = 0 Barg
T = 0 - 120 °C



CompactChem P 5 l
P = 0 barg
T = 20 - 120 °C



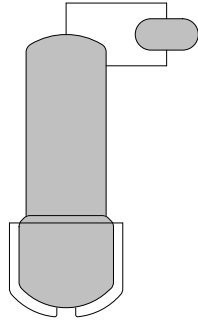
CompactChem lab 1 l
P = 0 - 10 barg
T = 20 - 250 °C



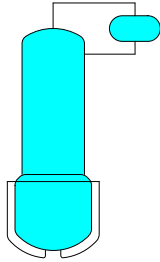
Coflore 0.1 l
P = 0 - 4 barg
T = 10 - 120 °C

The distillation column families.

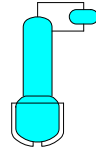
Batch columns



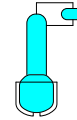
280 l still pot
30 tp structured pack
-1 / 0 barg
20 - 200 °C



70 l still pot
20 tp structured pack
-1 / 0 barg
20 - 200 °C



30 l still pot
20 tp structured pack
-1 / 0 barg
20 - 200 °C

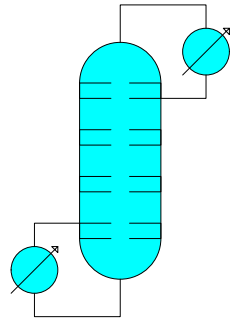


10 l still pot
40 tp structured pack
-1 / 0 barg
20 - 200 °C



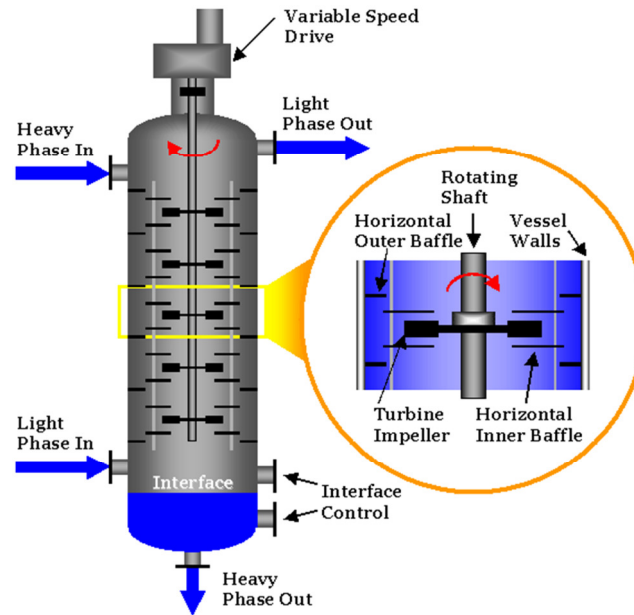
Several 1/ 5 l still pots
up to 30 sieve trays
-1 / 0 barg
20 - 200 °C

Continuous columns



4 cm internal diameter
30 sieve trays
-1 / 0 barg
20 - 180 °C

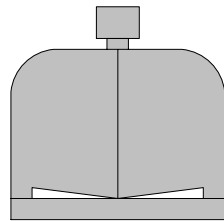
Liquid liquid continuous extraction column.



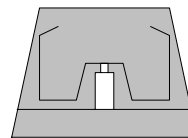
4 cm internal diameter
Up to 30 equilibrium stages
10 -100 °C

The filter family.

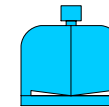
Filtration equipment



200 l nutsche filter dryer
0 - 4 barg
20 - 120 °C



30 l basket centrifuge
300 rpm



10 l nutsche filter
-1 - 0.4 barg
room temperature